

SPECTRAL SEQUENCES

BRADEN HOAGLAND

1 INTRODUCTION

Spectral sequences are a computational tool in homological algebra that allow for the homology of an unwieldy space to be broken down into a sequence of smaller computations. In this paper, we develop the basic theory of spectral sequences and their common constructions, finishing with a fundamental sufficient condition for their convergence.

At a very high level, each “element” of a spectral sequence gives a higher order approximation to the homology of a doubly graded object. For many objects, we need only take a finite number of approximations before we obtain the true homology, making spectral sequences a practical instead of just a theoretical tool.

2 PRELIMINARIES

To begin working with homological objects, we first define a basic notion of homology. We say a sequence of R -modules A is a *chain complex* if it comes equipped with morphisms $d_n : A_n \rightarrow A_{n-1}$ (called *differentials*) such that $d^2 = 0$.

$$\cdots \xrightarrow{d_{n+1}} A_n \xrightarrow{d_n} A_{n-1} \xrightarrow{d_{n-1}} \cdots$$

Because of the condition $d^2 = 0$, we know $\text{Im } d_n \subset \text{Ker } d_{n-1}$. If we also have the reverse inclusion for all n , i.e. the image of one map equals the kernel of the next, then we say that A is *exact*. To measure the failure of a complex to be exact, we introduce the notion of homologies. Define the *n -th homology* to be the quotient

$$H_n(A) \doteq \text{Ker } d_n / \text{Im } d_{n+1}.$$

Viewing chain complexes as objects in some category, we can naturally define morphisms between them. A *homomorphism of complexes* $f : A \rightarrow B$ is a collection of R -module homomorphisms $f_n : A_n \rightarrow B_n$ that respect the differentials of A and B . Visually, this means the following diagram commutes.

$$\begin{array}{ccccccc} \cdots & \longrightarrow & A_n & \longrightarrow & A_{n-1} & \longrightarrow & \cdots \\ & & \downarrow f_n & & \downarrow f_{n-1} & & \\ \cdots & \longrightarrow & B_n & \longrightarrow & B_{n-1} & \longrightarrow & \cdots \end{array}$$

Proposition 1. *A homomorphism of complexes induces a homomorphism between those complexes' homologies.*

Proof. Let $f : A \rightarrow B$ be a homomorphism of complexes, then define the map

$$\begin{aligned} \phi_n : H_n(A) &\rightarrow H_n(B) \\ [a] &\mapsto [f_n(a)]. \end{aligned}$$

This is a homomorphism since each f_n is a homomorphism. All that's left to show is that this is well-defined, which follows from the commutativity of the above diagram. If $z \in \text{Ker } d_n^A$, then $(d \circ f_n)(z) = (f_{n-1} \circ d)(z) = f_{n-1}(0) = 0$, so $f_n(z) \in \text{Ker } d_n^B$. Thus f maps kernels to kernels. If $z \in \text{Im } d_{n+1}^A$, then $z = d(a)$ for some $a \in A_{n+1}$, so $f_n(z) = (f_n \circ d)(a) = (d \circ f_{n+1})(a)$, so $f_n(z) \in \text{Im } d_{n+1}^B$. Thus f also maps images to images, so the induced map between homologies is well-defined. \square

The notion of short exact sequences can be readily extended to work with chain complexes. We say a sequence $0 \rightarrow A \rightarrow B \rightarrow C \rightarrow 0$ of complexes is exact if each sequence of modules $0 \rightarrow A_n \rightarrow B_n \rightarrow C_n \rightarrow 0$ is exact.

The last tool we will need to work with spectral sequences is the long exact homology sequence. It allows us to extend a short exact sequence of complexes into a long exact sequence of the homologies. In order to prove it, we'll make use of the Snake Lemma, which we present here without proof.

Lemma 1 (Snake Lemma). *Suppose the rows of*

$$\begin{array}{ccccccc} A & \longrightarrow & B & \longrightarrow & C & \longrightarrow & 0 \\ & & \downarrow a & & \downarrow b & & \downarrow c \\ 0 & \longrightarrow & A' & \longrightarrow & B' & \longrightarrow & C' \end{array}$$

are exact, then there is an exact sequence

$$\text{Ker } a \rightarrow \text{Ker } b \rightarrow \text{Ker } c \rightarrow A' / \text{Im } a \rightarrow B' / \text{Im } b \rightarrow C' / \text{Im } c.$$

Theorem 1. *Suppose $0 \rightarrow A \rightarrow B \rightarrow C \rightarrow 0$ is a short exact sequence of complexes, then there is a long exact sequence of homologies*

$$\cdots \rightarrow H_n(A) \rightarrow H_n(B) \rightarrow H_n(C) \rightarrow H_{n-1}(A) \rightarrow H_{n-1}(B) \rightarrow \cdots .$$

Proof. Suppose the morphisms in the short exact sequence are $f : A \rightarrow B$ and $g : B \rightarrow C$, then consider the diagram

$$\begin{array}{ccccccc} A_n / \text{Im } d_{n+1}^A & \xrightarrow{f_n^*} & B_n / \text{Im } d_{n+1}^B & \xrightarrow{g_n^*} & C_n / \text{Im } d_{n+1}^C & \longrightarrow & 0 \\ & & \downarrow a & & \downarrow b & & \downarrow c \\ 0 & \longrightarrow & \text{Ker } d_{n-1}^A & \xrightarrow{f_{n-1}^*} & \text{Ker } d_{n-1}^B & \xrightarrow{g_{n-1}^*} & \text{Ker } d_{n-1}^C \end{array}$$

where f_n^* and g_n^* are induced by f and g and are well-defined by Proposition 1. The vertical map a is induced by d_n^A by

$$a([x]) = d_n^A(x),$$

and the maps b and c are defined similarly. The exactness of both rows follows from the assumption that $\text{Ker } g_n = \text{Im } f_n$ for all n . We also have

$$\begin{aligned} \text{Ker } a &= \frac{\text{Ker } d_n^A}{\text{Im } d_{n+1}^A} = H_n(A), \\ \frac{\text{Ker } d_{n-1}^A}{\text{Im } a} &= \frac{\text{Ker } d_{n-1}^A}{\text{Im } d_n^A} = H_{n-1}(A), \end{aligned}$$

with similar statements for the other kernels and cokernels. Thus by the Snake Lemma, there is an exact sequence

$$H_n(A) \rightarrow H_n(B) \rightarrow H_n(C) \rightarrow H_{n-1}(A) \rightarrow H_{n-1}(B) \rightarrow H_{n-1}(C).$$

Chaining together the respective exact sequences for each n gives the desired long exact sequence of homologies. \square

3 SPECTRAL SEQUENCES

With these preliminaries taken care of, we can define and study spectral sequences. In particular, we will be working spectral sequences of homological type, as defined below.

Definition 1. A spectral sequence is a collection $E = \{E^r\}_{r \geq 0}$ of bigraded R -modules called pages. Each page E^r is equipped with endomorphisms

$$d^r : E^r \rightarrow E^r$$

such that $d^r \circ d^r = 0$. These are the differentials of E^r . The pages are related by

$$E^{r+1} \cong H_*(E^r).$$

A homological spectral sequence is a spectral sequence whose differentials have bidegree $(-r, r-1)$, i.e.

$$d^r : E_{p,q}^r \rightarrow E_{p-r, p+r-1}^r.$$

We'll be primarily concerned with the case when all $E_{p,q}^r$ are in the first quadrant, i.e. $E_{p,q}^r$ is nonzero only when $p, q \geq 0$.

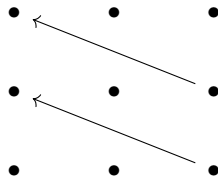


Figure 1: Some differentials for $r = 2$. Each dot represents some $E_{p,q}^r$.

The choice of bidegree for each d^r might seem rather odd. In fact, it is actually quite natural, and we will see why later on in the discussion preceding Theorem 3.

Eventually, every $E_{p,q}^r$ will stabilize in the sense that $E_{p,q}^{r+1} = E_{p,q}^r$. Fix some pair p, q , then for $r > \max\{p, q+1\}$, the differential coming into $E_{p,q}^r$ will come from the fourth quadrant, and the differential coming out of $E_{p,q}^r$ will enter the second quadrant. This gives us the complex

$$0 \xrightarrow{d^r} E_{p,q}^r \xrightarrow{d^r} 0$$

which shows that the homology of $E_{p,q}^r$ is $H(E_{p,q}^r) = E_{p,q}^r/0 = E_{p,q}^r$. This gives us a notion of pointwise convergence within our spectral sequence, and we denote the stable value of $E_{p,q}^r$ by $E_{p,q}^\infty$.

A natural question is what these limiting terms actually approach and how the information they contain is helpful. In the next two sections, we examine how spectral sequences arise, and from this we can deduce what $E_{p,q}^\infty$ actually represents and how it can be useful.

4 EXACT COUPLES

The first way we can build a spectral sequence is through an exact couple. Interesting spectral sequences arise directly from some exact couples, and they are also useful in serving as a stepping stone in the construction process. In the next section, we will see how particular complexes can be turned into exact couples, after which we can carry out the below process and gain a spectral sequence.

Definition 2. *An exact couple is a cyclic long exact sequence of R -modules*

$$\dots \xrightarrow{j} E \xrightarrow{k} D \xrightarrow{i} D \xrightarrow{j} E \xrightarrow{k} \dots$$

We can depict an exact couple more compactly with the following diagram.

$$\begin{array}{ccc} D & \xrightarrow{i} & D \\ & \swarrow k & \searrow j \\ & E & \end{array}$$

Note that D and E have no additional structure or grading. We will see the effects of adding a grading soon, but it is unnecessary for our initial analysis.

By exactness, $k \circ j = 0$. Then if we define an endomorphism of E by $d \doteq j \circ k$, we get $d \circ d = (jk)(jk) = j(kj)k = 0$. It then makes sense to define $H_*(E, d)$, the homology of E with respect to d .

This induces a new couple, which we call the *derived couple*, where D is replaced by $i(D)$ and E is replaced by its homology $H_*(E)$ with respect to d .

$$\begin{array}{ccc} i(D) & \xrightarrow{i'} & i(D) \\ & \swarrow k' & \searrow j' \\ & H_*(E) & \end{array}$$

The maps in the derived couple are defined

$$\begin{aligned} i' &\doteq i \mid_{i(D)} \quad , \\ j'(i(x)) &\doteq [j(x)] \quad , \\ k'([y]) &\doteq k(y) \quad , \end{aligned}$$

where the equivalence classes $[\cdot]$ are modulo the image of d .

Proposition 2. *The derived couple of an exact couple is itself an exact couple.*

Proof. The fact that $j'i' = k'j' = i'k' = 0$ all follow from expressing them in terms of i, j, k and using the assumed property $ji = kj = ik = 0$. Then we must show that the kernel of each map is contained in the image of the previous map. Suppose $j'(i(x)) = [j(x)] = 0$, then $j(x) \in \text{Im } d$, so for some $y \in E$,

$$j(x) = (jk)(y) \implies x - k(y) \in \text{Ker } j = \text{Im } i.$$

This implies $x - k(y) = i(z)$ for some $z \in D$. Then since $ik = 0$,

$$i(x - k(y)) = i(x) = i^2(z) \in \text{Im } i'.$$

Thus $\text{Ker } j' \subset \text{Im } i'$. If $y \in E$ and $k'([y]) = k(y) = 0$, then $y \in \text{Ker } k = \text{Im } j$, so for some $z \in D$,

$$y = j(z) \implies [y] = [j(z)] = j'(i(z)) \in \text{Im } j'.$$

Thus $\text{Ker } k' \subset \text{Im } j'$. Finally, if $z \in D$ and $i'(i(z)) = i^2(z) = 0$, then $i(z) \in \text{Ker } i = \text{Im } k$. Then for some $y \in E$, we have $i(z) = k(y) = k'([y]) \in \text{Im } k'$. Thus $\text{Ker } i' \subset \text{Im } k'$. This shows that our derived couple is in fact an exact couple. \square

Iterating, we can construct a sequence of exact couples with the familiar properties that the next “ E ” term is the homology of the previous one and that our “ d ” maps become 0 when composed. Adding in a bigrading makes this into a spectral sequence.

Theorem 2. *Suppose D and E are bigraded R -modules that form an exact couple with maps i, j, k satisfying*

$$\deg i = (1, -1), \quad \deg j = (1, -1), \quad \deg k = (-1, 0),$$

then this exact couple determines a homological spectral sequence $\{E^r\}_{r \geq 0}$ with E^r the r -th derived couple.

Proof. First note that by their definitions,

$$\begin{aligned} \deg i^{(r)} &= \deg i, \\ \deg k^{(r)} &= \deg k \end{aligned}$$

for all r . We can then show that $\deg d^{(r)} = (-r, r-1)$ by induction on the degree of $j^{(r)}$. We claim that $j^{(r)} = (1-r, r-1)$. For the base case $r = 0$, note that $\deg j = (1, -1) = (1-r, r-1)$, which means that the 0-th differential has bidegree $\deg d = \deg jk = (0, -1) = (-r, r-1)$. Now suppose that

$$\deg j^{(r-1)} = (2-r, r-2),$$

so that $\deg d^{(r-1)} = (1-r, r-2) = (-(r-1), (r-1)-1)$. We can easily check that our base case $r-1 = 0$ satisfies this condition. Suppose $j^{(r)}(i^{(r-1)}(x)) = [j^{(r-1)}(x)]$ is an element of $E_{p,q}^r$, then by our inductive hypothesis and the fact that $\deg i^{(r-1)} = \deg i = (1, -1)$, this element must have come from

$$i^{(r-1)}(D_{p+r-2, q-r+2}) = D_{p+r-1, q-r+1}.$$

Thus $\deg j^{(r)} = (1-r, r-1)$, which implies $\deg d^{(r)} = \deg j^{(r)}k^{(r)} = \deg j^{(r)} + \deg k = (-r, r-1)$, as desired. \square

Example 1 (Bockstein Spectral Sequence). Suppose C is a torsion-free complex over \mathbb{Z} , meaning that no element in C has finite order except the identity. Now consider the short exact sequence

$$0 \longrightarrow \mathbb{Z} \xrightarrow{p} \mathbb{Z} \xrightarrow{\text{mod } p} \mathbb{Z}_p \longrightarrow 0.$$

We can take the tensor product with C , using the fact that the tensor product of a module and its base ring is isomorphic to the original module, to produce another short exact sequence

$$0 \longrightarrow C \xrightarrow{p} C \xrightarrow{\text{mod } p} C \otimes \mathbb{Z}_p \longrightarrow 0.$$

Note that the exactness of this sequences follows from C being torsion-free, since this forces the p map to be injective and the mod p map to be surjective.

Since each element of this sequence is a complex, we can construct a long exact sequence of homologies using Theorem 1.

$$\cdots \longrightarrow H_n(C) \xrightarrow{i} H_n(C) \xrightarrow{j} H_n(C \otimes \mathbb{Z}_p) \xrightarrow{k} H_{n-1}(C) \longrightarrow \cdots$$

We can make each homology bigraded with $H_*(\cdot)_{p,q} \doteq H_{p+q}(\cdot)$, which then shows

$$\deg i = (1, -1), \quad \deg j = (1, -1), \quad \deg k = (-1, 0).$$

Then the long exact sequence below induces a spectral sequence by Theorem 2.

$$\begin{array}{ccc} H_*(C) & \xrightarrow{\quad} & H_*(C) \\ & \swarrow \quad \searrow & \\ & H_*(C \otimes \mathbb{Z}_p) & \end{array}$$

This induced spectral sequence is called the Bockstein spectral sequence.

5 FILTERED COMPLEXES

Filtered complexes are a natural decomposition of complexes that give rise to exact couples, and thus also induce spectral sequences. Suppose C is a complex of R -modules, then a *filtration* of C is a sequence

$$\cdots \subset F_{p-1}C \subset F_pC \subset F_{p+1}C \subset \cdots \subset C$$

of subcomplexes F_pC of C . This induces a filtration on each module of C as well. Just define $F_pC_n = F_pC \cap C_n$. This gives us a bigrading on our complex that will be vital in the proof of Theorem 3.

Definition 3. We say that C is a filtered complex if there is some filtration F on C that the differential of C respects, i.e. $d(F_pC_n) \subset F_pC_{n-1}$ for all n .

A filtration is *bounded* if it only has a finite number of layers: for all n , there are numbers $s(n), t(n)$ such that $F_{s(n)}C_n = 0$ and $F_{t(n)}C_n = C_n$. If a filtration satisfies $F_{-1}C_n = 0$ and

$F_n C_n = C_n$ for all n , we call it the *canonically bounded* filtration. We visualize this particular filtration below.

$$\begin{array}{ccccccc}
 F_n C = C : & \cdots & \longrightarrow & C_2 & \longrightarrow & C_1 & \longrightarrow & C_0 & \longrightarrow & 0 \\
 & \cup & & \cup & & \cup & & \cup & & \\
 & \vdots & & \vdots & & \vdots & & \vdots & & \vdots \\
 & \cup & & \cup & & \cup & & \cup & & \\
 F_1 C : & \cdots & \longrightarrow & F_1 C_2 & \longrightarrow & C_1 & \longrightarrow & C_0 & \longrightarrow & 0 \\
 & \cup & & \cup & & \cup & & \cup & & \\
 F_0 C : & \cdots & \longrightarrow & F_0 C_2 & \longrightarrow & F_0 C_1 & \longrightarrow & C_0 & \longrightarrow & 0 \\
 & \cup & & \cup & & \cup & & \cup & & \\
 F_{-1} C : & \cdots & \longrightarrow & 0 & \longrightarrow & 0 & \longrightarrow & 0 & \longrightarrow & 0
 \end{array}$$

Note that each layer of any filtration is intertwined with all others below it, but we would like to be working with disjoint parts. To do this, we can simply take quotients: define the *associated graded complex* $E^0 C$ componentwise by

$$E_{p,q}^0 C \doteq F_p C_{p+q} / F_{p-1} C_{p+q}.$$

Since d respects the filtration, this has its own differential induced by that of C . Our filtration on C also induces a filtration on the homology of C by

$$F_p H_{p+q}(C) \doteq F_p H_*(C) \cap H_{p+q}(C).$$

To show that filtered complexes give rise to spectral sequences, we construct an exact couple from C . Our filtration levels of C and their respective quotients fit into a natural short exact sequence of complexes

$$0 \rightarrow F_{p-1} C \hookrightarrow F_p C \twoheadrightarrow E_p^0 C \rightarrow 0,$$

where the two intermediate maps are the canonical inclusion and projection maps, respectively. The associated long exact sequence of homologies is then

$$\cdots \rightarrow H_n(F_{p-1} C) \xrightarrow{i} H_n(F_p C) \xrightarrow{j} H_n(E_p^0 C) \xrightarrow{k} H_{n-1}(F_{p-1} C) \rightarrow \cdots.$$

Then letting $D_{p,q} \doteq H_{p+q}(F_p C)$ and $E_{p,q} \doteq H_{p+q}(E_p^0 C)$, we can form an exact couple (D, E, i, j, k) . For $p+q=n$, the above long exact sequence can be written

$$\cdots \rightarrow D_{p-1,q+1} \xrightarrow{i} D_{p,q} \xrightarrow{j} E_{p,q} \xrightarrow{k} D_{p-1,q} \rightarrow \cdots$$

which shows that i, j, k have the bidegrees from Theorem 2. This means that our exact couple determines a spectral sequence, so we can always build a spectral sequence from any filtered complex.

6 CONVERGENCE OF SPECTRAL SEQUENCES

Now that we've determined ways to construct spectral sequences, we can begin to endow our limiting terms $E_{p,q}^\infty$ with meaning. In particular, the limiting terms of a spectral sequenced

induced by a filtered complex C capture significant information about the homology $H_*(C)$ of C .

Definition 4. Suppose C is some chain complex. A spectral sequence E is said to converge to $H_*(C)$ if there is some filtration on C such that

$$E_{p,q}^\infty \cong F_p H_{p+q}(C) / F_{p-1} H_{p+q}(C).$$

Note that a single $E_{p,q}^\infty$ term only gives some of the information about $H_{p+q}C$. If we want as much information as possible about some $H_n(C)$, we need to examine all $E_{p,q}^\infty$ such that $p+q=n$. In the special case that our filtration is canonically bounded and C is finite dimensional, we recover the quotients

$$F_0 H_n(C), \quad F_1 H_n(C) / F_0 H_n(C), \quad \dots \quad H_n(C) / F_{n-1} H_n(C).$$

We can then construct $H_n(C)$ by simply taking the direct sum of all these quotients:

$$H_n(C) \cong \bigoplus_{p+q=n} E_{p,q}^\infty.$$

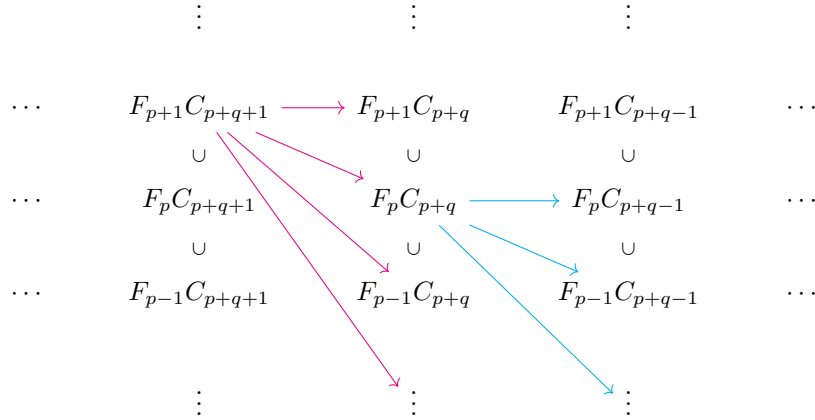
As a visual example, the highlighted terms in the following grid are the limiting terms we would use to determine $H_3(C)$.

$E_{0,3}^\infty$	$E_{1,3}^\infty$	$E_{2,3}^\infty$	$E_{3,3}^\infty$
$E_{0,2}^\infty$	$E_{1,2}^\infty$	$E_{2,2}^\infty$	$E_{3,2}^\infty$
$E_{0,1}^\infty$	$E_{1,1}^\infty$	$E_{2,1}^\infty$	$E_{3,1}^\infty$
$E_{0,0}^\infty$	$E_{1,0}^\infty$	$E_{2,0}^\infty$	$E_{3,0}^\infty$

We have now seen that, at least in the case that each C_n is finite dimensional and F is bounded, this convergence property allows us to determine homologies of our complex C up to isomorphism. Even if C and F were not so simple, having a sequence of quotients of $H(C)$ gives great insight into the structure of $H(C)$; however, it remains to be seen under which conditions a filtered complex's induced spectral sequence will converge. As it turns out, having a bounded filtration is all we need to guarantee convergence.

Before proving this, we'll need a bit of setup. We'll start by considering the map d on a filtered complex C . As noted earlier, we can use our filtration to give a bigrading on our

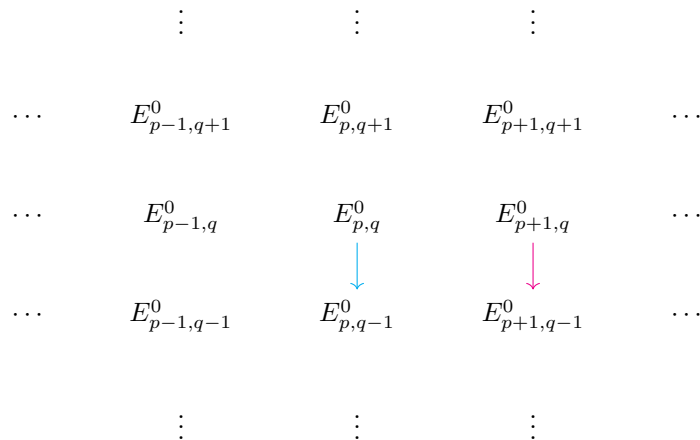
complex. We can visualize this as



where the arrows represent the differential d and its restrictions to the various levels of its range. Every element in this grid should have arrows attached to them, but only two sets of arrows are shown to reduce clutter. Also note that d cannot send elements “up” the grid since it respects the filtration by assumption.

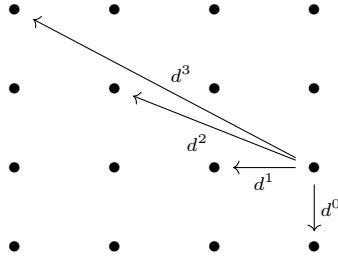
To construct a spectral sequence from all this, we can construct the associated graded module E^0 and take homologies to gain E^1, E^2 , etc., using d to induce endomorphisms d^r on each page E^r . Intuitively, each d^r corresponds to the restriction of d sending elements down r levels. In the proof of Theorem 3, we will construct these maps explicitly. An effect of our indexing convention is that our grid will become “skewed” once we start working with the E^r pages. The result is that while the restrictions of d on the original filterex complex have bidegrees of the form $(1, -r)$, each d^r will have bidegree $(-r, r - 1)$. This motivates the definition of a homological spectral sequence, in which we required the bidegrees of each d^r to be $(-r, r - 1)$.

For example, the E^0 page will have differentials with bidegree $(0, -1)$, as visualized below.



The two arrows in this diagram correspond to the two sets of arrows in the diagram of the original filtered complex. As we go to higher pages, the arrows will extend up and to the left as an effect of their bidegree. In the below diagram, we visualize the first few d^r originating

from the same (p, q) -th component of each page.



Theorem 3. Suppose C is a filtered complex with bounded filtration F , then the induced spectral sequence E converges to $H_*(C)$, i.e.

$$E_{p,q}^\infty \cong F_p H_{p+q}(C) / F_{p-1} H_{p+q}(C).$$

Proof. We begin with a few definitions. Suppose our filtered complex is

$$\cdots \rightarrow C_{n+1} \rightarrow C_n \rightarrow C_{n-1} \rightarrow \cdots$$

with differential d . Since its given filtration F is bounded, we know that for all n , we can find $s(n)$ and $t(n)$ such that

$$F_{s(n)} C_n = 0, \quad F_{t(n)} C_n = C_n.$$

Define $Z_{p,q}^r$ as the elements of $F_p C_{p+q}$ that are mapped r “levels” down by d , and define $B_{p,q}^r$ as the elements of $F_p C_{p+q}$ that came from r levels up. Explicitly,

$$\begin{aligned} Z_{p,q}^r &\doteq F_p C_{p+q} \cap d^{-1}(F_{p-r} C_{p+q-1}), \\ B_{p,q}^r &\doteq F_p C_{p+q} \cap d(F_{p+r} C_{p+q+1}). \end{aligned}$$

The limiting case of both of these is straightforward (and also a more familiar use of the letters Z and B). Define

$$\begin{aligned} Z_{p,q}^\infty &\doteq \text{Ker } d \cap F_p C_{p+q}, \\ B_{p,q}^\infty &\doteq \text{Im } d \cap F_p C_{p+q}. \end{aligned}$$

Because of the filtration’s structure as a collection of subsets, we get the following sequence of inclusions.

$$B_{p,q}^0 \subset B_{p,q}^1 \subset \cdots \subset B_{p,q}^\infty \subset Z_{p,q}^\infty \subset \cdots \subset Z_{p,q}^1 \subset Z_{p,q}^0$$

Because our filtration is bounded, we get the useful computational property that we will actually reach $Z_{p,q}^\infty$ and $B_{p,q}^\infty$ after some finite number of inclusions in the sequence above. To see this, note that for $r > \max\{s(p+q+1) - p, p - t(p+q-1)\}$, the component to the left of and r levels above $F_p C_{p+q}$ is just C_{p+q+1} and the component to the right of and r levels below $F_p C_{p+q}$ is just 0. Thus for this particular r (and all larger values), $Z_{p,q}^r = Z_{p,q}^\infty$ and $B_{p,q}^r = B_{p,q}^\infty$.

With this setup out of the way, we can begin the actual proof. We will first explicitly construct a homological spectral sequence induced by our filtered complex C , then show that its limiting terms approach the desired quotients of $H_*(C)$. We divide this process into four main steps.

Part I: Constructing the pages and differentials. The 0-th page of our sequence will just be the associated graded complex E^0 given by

$$E_{p,q}^0 = F_p H_{p+q}(C) / F_{p-1} H_{p+q}(C).$$

Now for $r \geq 1$, recursively define

$$E_{p,q}^r = \frac{Z_{p,q}^r}{Z_{p-1,q+1}^{r-1} + B_{p,q}^{r-1}}.$$

We now show that d induces endomorphisms d^r on each E^r . Note that since the elements of $Z_{p,q}^r$ are mapped down r levels in our filtration,

$$d(Z_{p,q}^r) \subset B_{p-r,q+r-1}^r.$$

Then by our tower of Z and B inclusions,

$$d(Z_{p,q}^r) \subset Z_{p-r,q+r-1}^r$$

and

$$\begin{aligned} d(Z_{p-1,q+1}^{r-1} + B_{p,q}^{r-1}) &= d(Z_{p-1,q+1}^{r-1}) + d(B_{p,q}^{r-1}) \\ &\subset B_{p-r,q+r-1}^{r-1} + 0 \\ &\subset B_{p-r,q+r-1}^{r-1} + Z_{p-r-1,q+r}^{r-1}. \end{aligned}$$

Thus our original differential d induces a well-defined map

$$d^r : E_{p,q}^r \rightarrow E_{p-r,q+r-1}^r.$$

Note that d^r has bidegree $(-r, r-1)$, as desired.

Part II: Showing that each page is the homology of the previous page. Now that we have defined our pages and differentials, we must show $E_{p,q}^{r+1} \cong H(E_{p,q}^r)$ in order for this to define a spectral sequence.

Suppose η is the natural projection

$$\begin{array}{c} Z_{p,q}^r \\ \downarrow \eta \\ E_{p,q}^r \end{array}$$

then $\text{Ker } d^r = \eta(Z_{p,q}^{r+1})$. Additionally,

$$\begin{aligned} \eta^{-1}(\text{Im } d^r) &= B_{p,q}^r + \text{Ker } \eta \\ &= B_{p,q}^r + B_{p,q}^{r-1} + Z_{p-1,q+1}^{r-1} \\ &= B_{p,q}^r + Z_{p-1,q+1}^{r-1}, \end{aligned}$$

where the last equality follows from our tower of B and Z inclusions giving $B_{p,q}^{r-1} \subset B_{p,q}^r$. This then means

$$\begin{aligned} Z_{p,q}^{r+1} \cap \eta^{-1}(\text{Im } d^r) &= Z_{p,q}^{r+1} \cap (B_{p,q}^r + Z_{p-1,q+1}^{r-1}) \\ &= Z_{p-1,q+1}^r + B_{p,q}^r. \end{aligned}$$

Thus we get that the homology of $E_{p,q}^r$ is

$$H(E_{p,q}^r) \cong Z_{p,q}^{r+1} / (B_{p,q}^r + Z_{p-1,q+1}^{r-1}) = E_{p,q}^{r+1}.$$

Part III: Constructing the desired isomorphism. Throughout this part of the proof, we will implicitly use the fact that since $E_{p,q}^\infty$ is achieved after a finite number of pages, it is in fact just $E_{p,q}^r$ for some r . This means we can use all our definitions from the previous two parts of the proof without worry. Also note that we can do the same for $Z_{p,q}^\infty$ and $B_{p,q}^\infty$.

We claim that d induces a map between $E_{p,q}^\infty$ and $F_p H_{p+q}(C)/F_{p-1} H_{p+q}(C)$. Suppose η and π are the following natural projections.

$$\begin{array}{ccc} Z_{p,q}^\infty & & \text{Ker } d \\ \downarrow \eta & & \downarrow \pi \\ E_{p,q}^\infty & & H_{p+q}(C) \end{array}$$

Then since

$$F_p H_{p+q}(C) = \pi(F_p C_{p+q} \cap \text{Ker } d) = \pi(Z_{p,q}^\infty),$$

π induces a surjective map $Z_{p,q}^\infty \rightarrow F_p H_{p+q}(C)$. Also, by the definition of $E_{p,q}^r$,

$$\pi(\text{Ker } \eta) = \pi(Z_{p-1,q+1}^\infty + B_{p,q}^\infty) = F_{p-1} H_{p+q}(C),$$

so π induces a surjective map $Z_{p-1,q+1}^\infty + B_{p,q}^\infty \rightarrow F_{p-1} H_{p+q}(C)$. We then have an induced surjection

$$d^\infty : E_{p,q}^\infty \rightarrow F_p H_{p+q}(C)/F_{p-1} H_{p+q}(C).$$

We claim that d^∞ is also injective. Since the kernel of d^∞ is all elements of $E_{p,q}^\infty$ that get mapped to $F_{p-1} H_{p+q}(C)$, we can express it in terms of η and π by

$$\begin{aligned} \text{Ker } d^\infty &= \eta(\pi^{-1}(F_{p-1} H_{p+q}(C)) \cap Z_{p,q}^\infty) \\ &= \eta(Z_{p-1,q+1}^\infty \cap d(C) \cap Z_{p,q}^\infty) \\ &\subset \eta(Z_{p-1,q+1}^\infty + B_{p,q}^\infty) \\ &= 0, \end{aligned}$$

where the last equality follows from the definition of $E_{p,q}^r$. Thus d^∞ is the isomorphism that shows

$$E_{p,q}^\infty \cong F_p H_{p+q}(C)/F_{p-1} H_{p+q}(C).$$

Hence the spectral sequence induced from C converges to $H_*(C)$. □

Example 2 (Homology of the 3-Sphere). *With a bit of extra information, it's possible to calculate the homology of S^3 using the homologies of S^1 and S^2 . We use the following theorem on the existence of the "Serre" spectral sequence without proof.*

Theorem 4. *Suppose $F \rightarrow X \rightarrow B$ is a fibration with B a path-connected space. If $\pi_1(B)$ acts trivially on $H_*(F)$, then there is a spectral sequence with*

$$E_{p,q}^2 \cong H_p(B; H_q(F)),$$

where the limiting terms $E_{p,q}^\infty$ are isomorphic to successive quotients of $H_{p+q}(X)$.

We will also need the following special case of the Hurewicz theorem.

Lemma 2. Given a path connected topological space X , the abelianization of $\pi_1(X)$ is isomorphic to $H_1(X)$.

Finally, we assume that the homologies of S^1 and S^2 are known to be

$$H_k(S^1) = \begin{cases} \mathbb{Z} & k = 0, 1 \\ 0 & \text{otherwise} \end{cases}$$

$$H_k(S^2) = \begin{cases} \mathbb{Z} & k = 0, 2 \\ 0 & \text{otherwise} \end{cases},$$

and we assume the existence of the Hopf fibration $S^1 \rightarrow S^3 \rightarrow S^2$. We now have enough tools to calculate $H_*(S^3)$. Note that since S^3 is simply connected, $\pi_1(S^3)$ must act trivially, so by Theorem 4 we can construct the Serre spectral sequence for S^3 using the Hopf fibration. This gives the second page E^2 componentwise by

$$E_{p,q}^2 = H_p(S^2; H_q(S^1)).$$

When $q = 0, 1$, $H_q(S^1) = \mathbb{Z}$, so the homology of S^2 is computed using the usual coefficients. Otherwise, we're working with trivial coefficients. Similarly, when $p = 0, 2$, $H_p(S^2; \mathbb{Z}) = \mathbb{Z}$, and otherwise it's 0. Thus the only nontrivial portion of the E^2 page is

$$\begin{array}{c|ccc} 1 & \mathbb{Z} & 0 & \mathbb{Z} \\ 0 & \mathbb{Z} & 0 & \mathbb{Z} \\ \hline & 0 & 1 & 2 \end{array}.$$

Since differentials on the E^2 page have bidegree $(-2, 1)$, there is only one nontrivial differential.

$$\begin{array}{ccc} \mathbb{Z} & \begin{array}{c} 0 \\ \swarrow d \\ 0 \end{array} & \mathbb{Z} \\ & & \mathbb{Z} \end{array}$$

Since S^3 is simply connected, $\pi_1(S^3)$ is trivial, and then so is its abelianization. Then by Lemma 2, $H_1(S^3) \cong 0$. This forces the top-left \mathbb{Z} to become 0 after taking homology, so d must be surjective. Now since d is necessarily a homomorphism, \mathbb{Z} is generated by $d(1)$. We must then have $d(1) = \pm 1$ in order for d to be surjective, so then any nonzero n is mapped to $\pm n$. Thus $\text{Ker } d$ is trivial, so d is injective and the homology of the bottom-right \mathbb{Z} must subsequently also be 0. Since all other entries have stabilized already, the third page of our spectral sequence is

$$\begin{array}{c|ccc} 1 & 0 & 0 & \mathbb{Z} \\ 0 & \mathbb{Z} & 0 & 0 \\ \hline & 0 & 1 & 2 \end{array}.$$

At this point, all differentials are trivial, so all the terms on the third page are in fact the limiting terms $E_{p,q}^\infty$. To recover $H_n(S^3)$, we can take the direct sum over diagonals satisfying $p + q = n$. Doing so gives

$$H_n(S^3) = \begin{cases} \mathbb{Z} & n = 0, 3 \\ 0 & \text{otherwise} \end{cases}.$$

REFERENCES

- [1] Timothy Y. Chow. “You Could Have Invented Spectral Sequences”. In: *Notices of the AMS* (2006).
- [2] David S. Dummit & Richard M. Foote. *Abstract Algebra*. 3rd ed. John Wiley and Sons, Inc., 2004.
- [3] John McCleary. *A User’s Guide to Spectral Sequences*. 2nd ed. Cambridge University Press, 2001.
- [4] Joseph J. Rotman. *An Introduction to Homological Algebra*. Academic Press, Inc., 1979.
- [5] Charles A. Weibel. *An Introduction to Homological Algebra*. Cambridge University Press, 1994.